

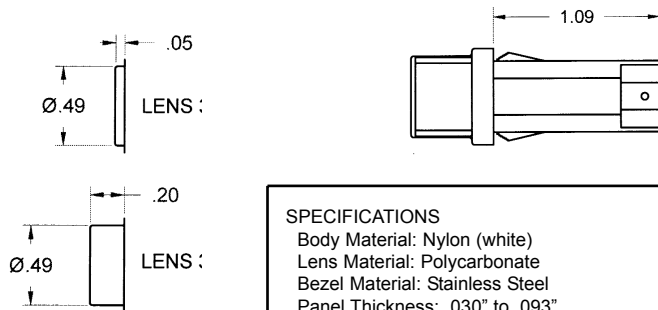
PANEL LAMPS & INDICATOR LIGHTS

A quality series of indicator lights, offered with a choice of 6" lead wires or .187" quick connect tab electrical terminations. All of the light assemblies on this page are for insertion in a .50" diameter round hole in panels with a minimum thickness of .030". The high voltage neon lamps may be connected directly to rated powerline voltages without the need for additional components.

.50" HOLE SIZE - .187 "QUICK Connect"



Note: Green Neon lamps are genuine green light generating lamps and not simply green lenses on ordinary neon bulbs.



SPECIFICATIONS

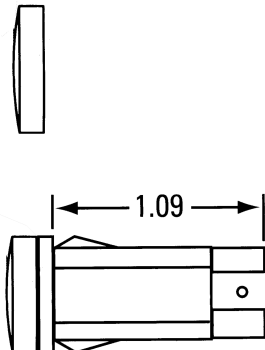
Body Material: Nylon (white)
 Lens Material: Polycarbonate
 Bezel Material: Stainless Steel
 Panel Thickness: .030" to .093"
 Mounting hole: 0.50" diameter
 Types: Neon and Incandescent
 Lens Styles: Cylinder diamond, (except white lens-cylinder translucent) two lens heights.
 (see chart, drawings)

Philmore Part No.	Lens Color	Lens Type	Lens Height	Lamp Type
11-2160	Red	Transparent	.20" high	12-14V INCANDESCENT
11-2162	Amber	Transparent	.20" high	12-14V INCANDESCENT
11-2164	White	Translucent	.20" high	12-14V INCANDESCENT
11-2166	Clear	Transparent	.20" high	12-14V INCANDESCENT
11-2168	Green	Transparent	.20" high	12-14V INCANDESCENT
11-2180	Red	Transparent	.20" high	28V INCANDESCENT
11-2182	Amber	Transparent	.20" high	28V INCANDESCENT
11-2184	White	Translucent	.20" high	28V INCANDESCENT
11-2186	Clear	Transparent	.20" high	28V INCANDESCENT
11-2188	Green	Transparent	.20" high	28V INCANDESCENT
11-2200	Red	Transparent	.20" high	125V NEON
11-2202	Amber	Transparent	.20" high	125V NEON
11-2204	White	Translucent	.20" high	125V NEON
11-2206	Clear	Transparent	.20" high	125V NEON
11-2208	Green	Transparent	.20" high	125V NEON
11-2210	Red	Transparent	.20" high	250V NEON
11-2212	Amber	Transparent	.20" high	250V NEON
11-2214	White	Translucent	.20" high	250V NEON
11-2216	Clear	Transparent	.20" high	250V NEON
11-2218	Green	Transparent	.20" high	250V NEON

Philmore Part No.	Lens Color	Lens Type	Lens Height	Lamp Type
11-2100	Red	Transparent	.05" low	28V INCANDESCENT
11-2102	Amber	Transparent	.05" low	28V INCANDESCENT
11-2104	White	Translucent	.05" low	28V INCANDESCENT
11-2106	Clear	Transparent	.05" low	28V INCANDESCENT
11-2108	Green	Transparent	.05" low	28V INCANDESCENT
11-2120	Red	Transparent	.05" low	125V NEON
11-2122	Amber	Transparent	.05" low	125V NEON
11-2124	White	Translucent	.05" low	125V NEON
11-2126	Clear	Transparent	.05" low	125V NEON
11-2128	Green	Transparent	.05" low	125V NEON
11-2140	Red	Transparent	.05" low	250V NEON
11-2142	Amber	Transparent	.05" low	250V NEON
11-2144	White	Translucent	.05" low	250V NEON
11-2146	Clear	Transparent	.05" low	250V NEON
11-2148	Green	Transparent	.05" low	250V NEON

110 - 120 VAC MULTI - LENS, NEON LAMP & LENSES KIT .50" Hole Size - .187 "QUICK CONNECT"

A kit for designers and experimenters to keep on hand at the bench. The kit contains a NEON lamp assembly, with white lens ready to connect to AC power and included are three different colored snap-on/snap-off lenses; red, amber, and clear. The unit fits a .50" hole in panels a minimum of .030" thickness. Snap on the lens for the color that you want. Lamp terminals are .0187" push-on quick-connect terminals (you could solder in a pinch).



Philmore Part No.	Description
11-1990	NEON multi-lens Lamp Assembly